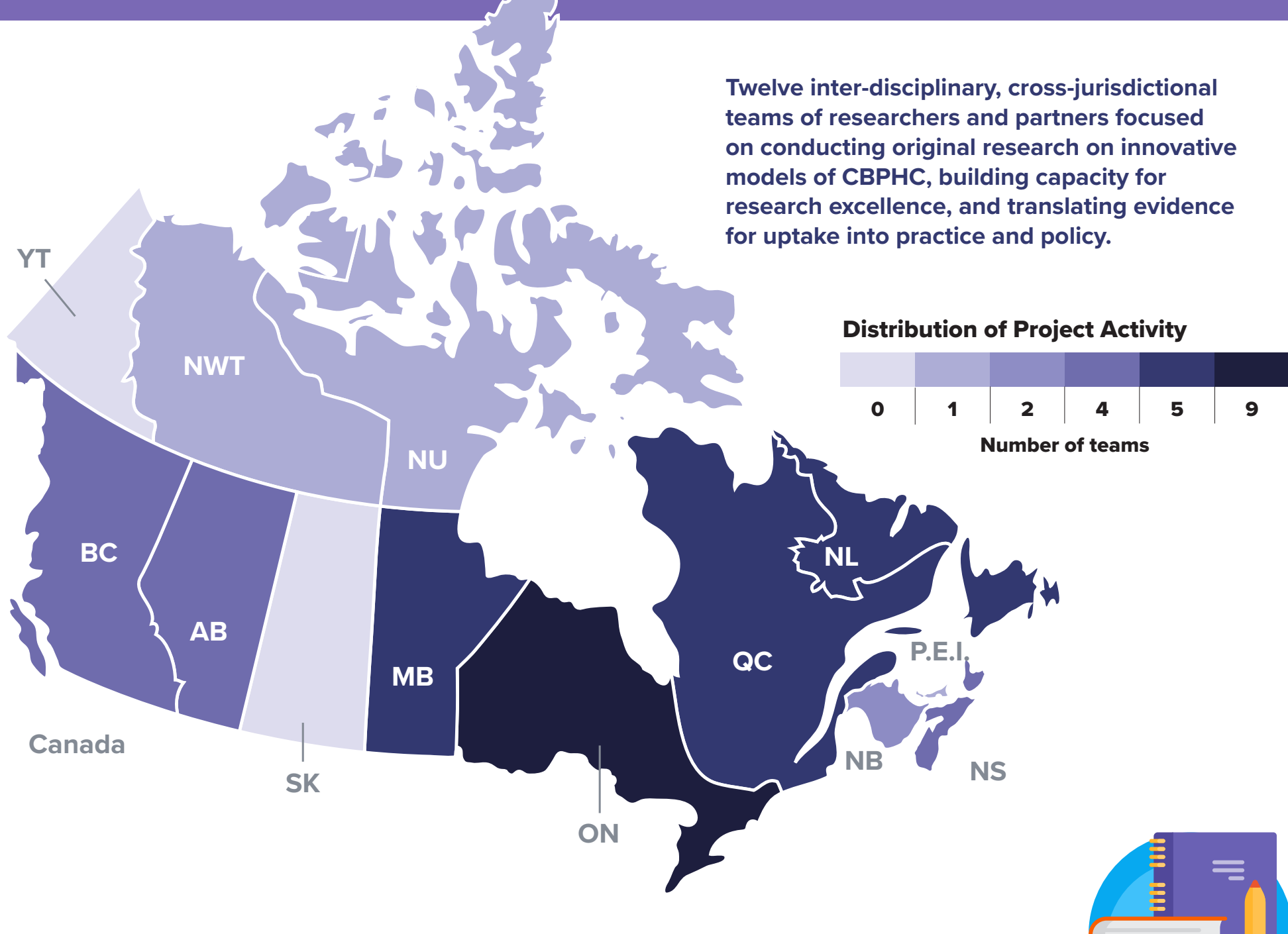


# Impact of the 12 Community Based Primary Health Care (CBPHC) Innovation Teams



## Knowledge



\*cumulative total across the 12 CBPHC teams

**1311**  
Total knowledge products/activities

A number of interview participants expressed that there was a **transformational change in their understanding of stakeholder engagement and partnership research**, including areas of partnering with Indigenous communities, principles of co-production, integrated knowledge translation (IKT), participatory-action research and patient engagement principles.



## Capacity Building



**495**  
Trainees across all 12 teams

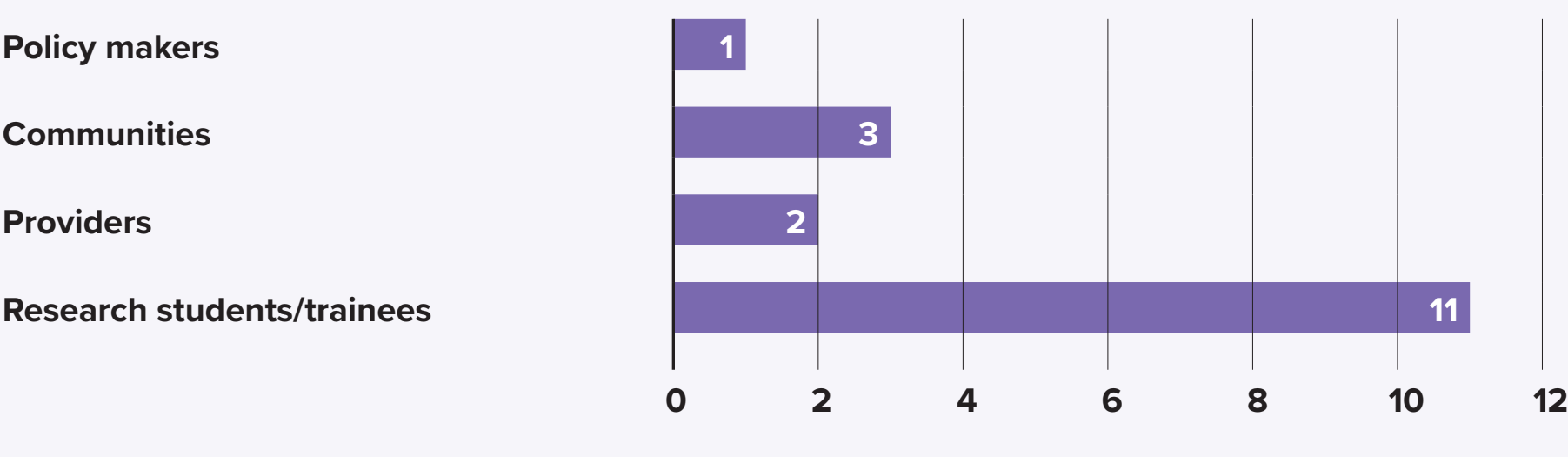


**81**  
Training Initiatives across all 12 teams

When asked about the impact of their projects, participants discussed a significant reciprocal impact in capacity-building with

- 1) the professional development of trainees and**
- 2) the purposeful transformation with community-based stakeholders to deepen their research skills and empower them to continue the innovation.**

### Training initiative target group



## Informed Decision Making



**24**  
Types of interventions across all 12 teams\*\*



**16**  
Guidelines or policies developed across all 12 teams

Common Outcome Indicator Category*	Number of Team Interventions
Access	13
Comprehensiveness	4
Coordination	9
Effectiveness	1
Equity	6
Healthcare costs	2

\*Measures the impacts and benefits on the provision of primary health care

\*\*interventions ranged from changing practice for providers to affecting transformational healthcare system policies

## Partnerships

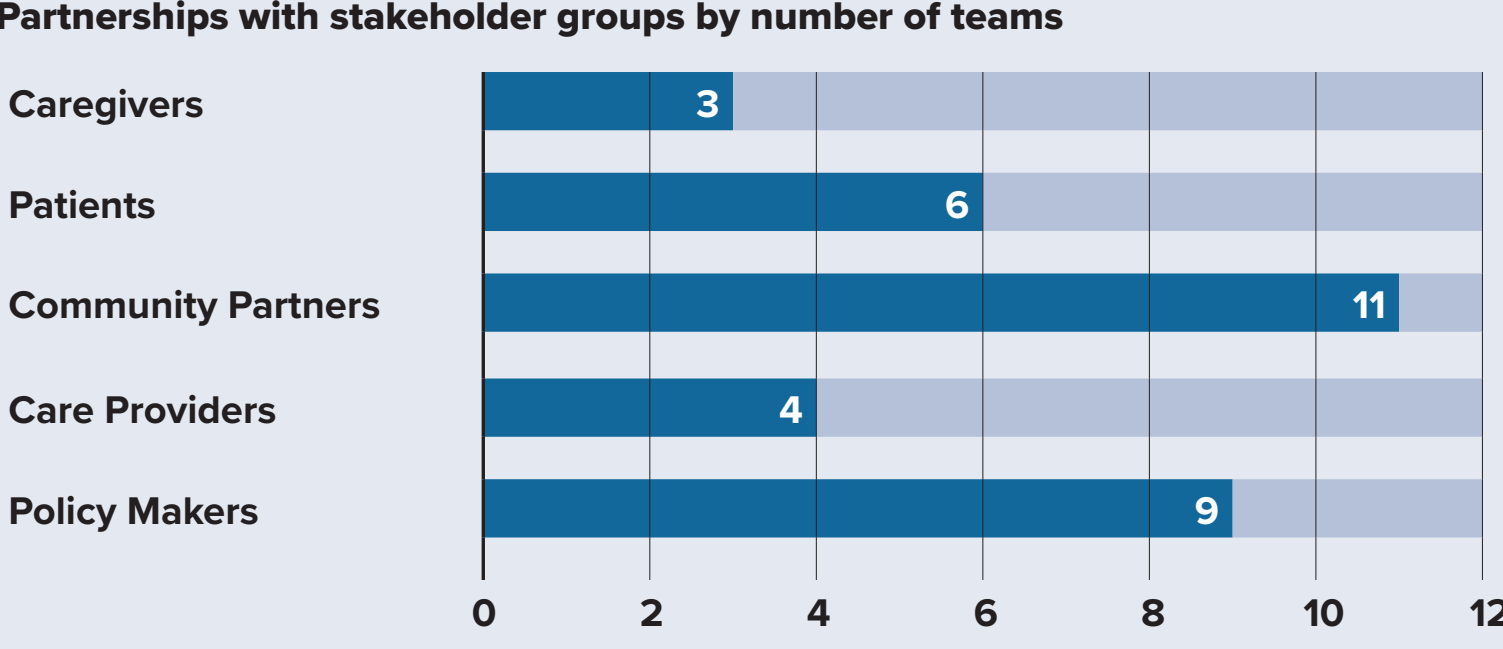


**184**  
Partner organizations across all 12 teams

“ The interesting thing is that with the 12 teams is that we really created a community...I think that that was quite a learning experience to know that that, you know, this kind of community can exist.

“ We also always had spaces for patients and caregivers and community partners. Because we, you know, believe strongly and saw the value of things like co-design and collaboration.

### Partnerships with stakeholder groups by number of teams



When asked about the impact of Partnerships through the Network, participants reported the **development and sustainment of a national platform for CBPHC research and solidifying a group of primary care researchers and stakeholders into a community of practice.**

## Broad Socioeconomic and Health



**\$46.8M**  
total leveraged by the 12 teams

Participants expressed that their research was impactful because it scaled or spread to multiple jurisdictions and was responsive to the needs of their communities and partners. They expressed that the community orientation of the work became a model for other researchers and communities interested in becoming involved in primary health care research studies.

### Interventions

